

Welcome to the Wings CRS Family!

Aloha and welcome to the Wings CRS Ohana! We're thrilled to have you and your family join our team. We've adopted the Hawaiian word "Ohana" which means everyone is family and at Wings CRS, our Talent & Culture Success Guide and our Ohana Guide offices are dedicated to ensuring you feel warmly welcomed and well-integrated into both the Wings CRS community and the vibrant local communities surrounding our Global Operations Center.



This welcome package is thoughtfully designed to provide comprehensive details and resources to help you choose a suitable community within a comfortable 30-mile radius of our Global Operations Center. Inside, you'll find extensive information on neighborhoods, schools, medical facilities, recreation areas, restaurants, essential services, and much more to simplify your transition.

Our Ohana Guide team is committed to personally assisting you every step of the way. We understand moving and settling into a new community involves significant adjustments, so please do not hesitate to reach out. We're here specifically for you and your family, ready and eager to support your journey and ensure your experience is seamless and enjoyable.

Welcome aboard! We're delighted to support you and your family in making Wings CRS your new home.

Zone 4: Bulverde & Eastern Hill Country Zone

- **Overview**
 - History
 - Climate
 - Demographics
 - Crime
 - Housing Costs
 - Average Wage Earnings
 - **Listings by Category**
 - Government Offices & Services
 - Medical Services
 - Educational Facilities
 - Grocers and Retailers
 - Restaurants
 - Sports Organizations
 - Recreation Areas and Facilities
 - Job Placement and Workforce Development
-

Zone 4: Bulverde & Eastern Hill Country Zone

Includes ZIP codes: 78163 (Bulverde), 78070 (Spring Branch), 78004 (Bergheim), 78027 (Kendalia), 78260 & 78261 (Far North San Antonio – Stone Oak area bordering Bulverde).

(This zone lies east/northeast of Boerne, covering western Comal County (Bulverde, Spring Branch) and eastern Kendall County (Bergheim, Kendalia). It also overlaps the northernmost edges of Bexar County (Timberwood Park/Stone Oak) which are within 30 miles of Boerne.)

Overview – Bulverde & Eastern Zone

History: Bulverde, “Front Porch of the Hill Country,” began as a settlement called Pieper Settlement in the 1850s by German farmers. It was renamed Bulverde in 1880. The area remained rural ranchland for over a century. In recent decades, Bulverde (incorporated 1999) and Spring Branch have grown as tranquil bedroom communities for San Antonio. Bergheim (“Mountain Home”) in Kendall County was founded in 1900 with a general store that still operates today. Kendalia (est. 1883) is a tiny ranching community known for its country hall and annual Kendalia BBQ. The far south of this zone overlaps Stone Oak, a

master-planned community developed in the 1980s–90s that spurred rapid suburban growth north along US-281 into Comal County.

Climate: Humid subtropical, with Hill Country influences. Bulverde’s elevation (~1,100 ft) can bring slightly cooler nights. Summers are hot and humid (mid-90s°F highs). Winters are mild – occasional freezes but snow is rare. This zone may get a bit more rainfall (especially toward Canyon Lake to the east). Spring Branch/Kendalia can experience flash flooding along the Guadalupe River in heavy rain. Overall climate is pleasant, supporting wineries and vineyards that dot the eastern Hill Country.

Demographics: Bulverde (ZIP 78163) has ~15,389 residents zipdatamaps.com and has grown ~36% since 2010 zipdatamaps.com, reflecting suburban influx. Population is ~79% White, ~17% Hispanic zipdatamaps.com. It’s a mix of long-time locals and new suburban families. The median age is about 45. Spring Branch (78070) covers a large unincorporated area (including parts of Canyon Lake); population ~19,800 simplemaps.com. Many Spring Branch residents live on acreage or near the Guadalupe River. **78260/78261** (Timberwood Park/Stone Oak) are densely populated (~37K in 78260 simplemaps.com) and largely affluent (and predominantly White and Asian). Kendalia and Bergheim are very small (Kendalia pop. ~478 unitedstateszipcodes.org, Bergheim included in 78004 count) – these areas remain rural with low density. Overall, this zone blends suburban developments (south) with rural ranch homesteads (north).

Crime: Very low. Bulverde and Spring Branch are known for their safety and low crime rates. The City of Bulverde has a police department; Comal County Sheriff covers Spring Branch and rural areas. Crime largely consists of the occasional property crime (theft from sheds, etc.) or traffic infractions. Stone Oak (78260/261) area has low violent crime but does see some property crime (car burglaries) typical of suburban neighborhoods. Kendalia and Bergheim report almost no crime events – these are tight-knit rural communities.

Housing Costs: Housing ranges from **upscale suburban** to **rural acreage**:

- In Bulverde (78163), the median home value is about **\$460,000** (2025) zillow.com. Many homes are on 1–5 acre lots. There are gated neighborhoods like Belle Oaks with new custom homes \$700K+. Also older ranch houses and manufactured homes exist on large lots outside the city.
- Spring Branch (78070) covers from Hwy 281 west to Blanco – near 281, many new subdivisions (e.g., Rivermont) with homes ~\$350K–\$500K. Closer to the Guadalupe River, riverfront properties and rural cabins vary widely in price.
- Stone Oak (78260/78258) housing is suburban tract to luxury – median around \$450K but with wide range; Timberwood Park (78260) has many custom homes on 0.5–1 acre lots, \$500K+.

- Rural Kendall Co. (Bergheim/Kendalia 78004/78027) has large ranch properties; land prices have jumped (going rate ~\$20K+ per acre). Few developments there yet, though Bergheim sees some spillover from Bulverde.
- Notably, **Median household incomes** in Bulverde ZIP 78163 are about **\$113,924** zipdatamaps.com (reflecting many high-earning households), indicating strong buying power and supporting the rising home prices. Spring Branch incomes also above average but with more variability.

Average Wages & Earnings: The zone is relatively affluent. Bulverde’s median household income (~\$114K) is nearly double the U.S. median zipdatamaps.com. Many residents are professionals commuting to San Antonio (roughly 20–30 minute drive). There is also local wealth from longtime ranch owners. Unemployment is very low (~3%). Local jobs in Bulverde include retail (HEB, Home Depot), service (restaurants, medical offices), and education (Comal ISD). However, a large portion of the workforce drives to San Antonio or New Braunfels for employment. Stone Oak area provides nearby office jobs (several corporate offices and medical facilities along 281). The rural north (Kendalia) has ranching-related income and cottage industries (e.g., Kendalia Honey Farm). Overall, earnings are solid, and poverty rates are low.

Government & Public Services (Zone 4)

Office / Service	Address	Phone	Website/Notes
City of Bulverde – City Hall	30360 Cougar Bend, Bulverde, TX 78163	(830) 438-3612	bulverdetx.gov bulverdetx.gov
Bulverde Police Department	30360 Cougar Bend, Bulverde, TX 78163	(830) 438-3612 x203	bulverdetx.gov/police
Comal County Sheriff – Spring Branch Substation	20170 Hwy 46 W, Spring Branch, TX 78070	(830) 620-3400	co.comal.tx.us/SHERIFF (patrols unincorporated areas)
Comal County Offices – Bulverde Annex	30470 Cougar Bend, Bulverde, TX 78163	(830) 221-1350	County Clerk, Tax, Vehicle Reg. co.comal.tx.us
U.S. Post Office – Bulverde	2395 Bulverde Rd, Bulverde, TX 78163	(830) 438-4367	USPS services for Bulverde/Spring Branch.

Office / Service	Address	Phone	Website/Notes
U.S. Post Office – Bergheim (rural)	1 Old Curry Creek Rd, Bergheim, TX 78004	(830) 336-2112	Small USPS branch (limited hours).
Bulverde/Spring Branch Library	131 Bulverde Crossing, Bulverde, TX 78163	(830) 438-4864	bsblibrary.org – Serves Comal Co. residents with programs, meeting rooms.
Kendalia Public Library (volunteer-run)	261 TX-473, Kendalia, TX 78027	(830) 336-4664	Limited hours, community book exchange.
Utilities: (note)			Bulverde/Spring Branch have CPS Energy (electric), Canyon Lake Water Service Co. (water), GVTC (fiber internet/phone). Kendall co. parts often on well water & septic systems.

Medical Services

Facility / Provider	Address	Phone	Website/Notes
Methodist ER – Bulverde (24/7 Emergency)	20475 Hwy 46, Ste 100, Spring Branch, TX 78070	(830) 252-5200	Freestanding ER (Methodist Healthcare) sahealth.com sahealth.com – handles emergencies locally.
Canyon Lake Urgent Care & Primary (Bulverde)	1850 Hwy 281 N, Suite 100, Bulverde, TX 78163	(830) 228-4500	Walk-in urgent care and family practice.
Bulverde Family Medicine Clinic	32840 US-281 N, Bulverde, TX 78163	(830) 438-7181	Longstanding family doctor’s office.
Texas Oncology – Bulverde (Cancer Care)	502 Hospice Way, Bulverde, TX 78163	(830) 980-9870	Oncology clinic serving North SA & Comal.
Baptist Neighborhood Hospital – Spring Branch	2699 Hwy 281 N, Spring Branch, TX 78070	(830) 438-8282	Small inpatient and ER facility (in development).
VA Clinic – North Central (for veterans)	17440 Henderson Pass, San Antonio, TX 78232	(210) 483-2900	VA outpatient clinic ~15 miles SE (serves zone veterans).

Facility / Provider	Address	Phone	Website/Notes
Spring Branch Dental Care	20475 TX-46, Ste 220, Spring Branch, TX 78070	(830) 438-7444	General dentistry (one of several dental offices in Bulverde).
Mental Health: Hill Country MHDD (Comal)	655 Landa St, New Braunfels, TX 78130	(830) 609-3150	Regional mental health services (New Braunfels office covers Bulverde area).

For major hospital care, residents use facilities in San Antonio or New Braunfels. The **closest full-service hospitals** are Methodist Stone Oak (25 min south) and CHRISTUS Santa Rosa-New Braunfels (30 min east). The new freestanding ER in Bulverde sahealth.com has been a welcome addition, providing emergency care locally.

Bulverde and Spring Branch also have numerous private practices: chiropractors, physical therapy (e.g., **OSSO Sports & Spine** on Hwy 281), and veterinary clinics (Bulverde Animal Hospital, etc., since many have pets and livestock).

Educational Institutions

- **Comal Independent School District (Comal ISD)** – Serves all of Bulverde, Spring Branch, and outlying areas. **District Office:** 1404 IH-35 N, New Braunfels, TX 78130; (830) 221-2000. Key Comal ISD schools in zone:
 - *Smithson Valley High School*, 14001 Hwy 46 W, Spring Branch, TX 78070; (830) 885-1000 comalisd-svhs.edlioschool.com har.com. Large 6A high school (2,800+ students) known for strong academics and athletics (SV Rangers). It serves Bulverde, Spring Branch, and parts of north 281 corridor.
 - *Smithson Valley Middle School* (adjacent to SVHS) and *Spring Branch Middle School* (21053 Hwy 46 W).
 - *Bill Brown Elementary School*, 20410 Hwy 46 W, Spring Branch, TX 78070; (830) 885-1400 – serves central Bulverde.
 - *Rahe Bulverde Elementary*, 1715 E Ammann Rd, Bulverde, TX 78163; (830) 885-1500.
 - Other elementaries: Johnson Ranch Elem, Indian Springs Elem (far south in 78261).
 - Students in far northern tip (Kendalia) fall under **Blanco ISD** or **Boerne ISD** depending on location – e.g., Kendalia often attends Blanco schools due to proximity.
- **Private Schools:**
 - *Living Rock Academy* – 2500 Bulverde Rd, Bulverde, TX 78163; (830) 387-2929. Christian college-prep school (grades K-12) in Bulverde.
 - *Bracken Christian School* – 670 Old Boerne Rd, Bulverde, TX 78163; (830) 438-3211. Established Christian school (PK-12) near Spring Branch.

- *San Antonio Christian School (SACS)* – though in north San Antonio (19202 Redland Rd), many Stone Oak area families send children there (~15 miles from Bulverde).
- Homeschooling is popular; groups like **Bulverde Home School Group** meet for co-ops at area churches.
- **Colleges/Trade:**
 - No colleges in Bulverde proper. However, **St. Philip’s College – Bulverde Spring Branch Campus** (a satellite of Alamo Colleges) offers vocational/technical courses at Smithson Valley HS in evenings.
 - Many young adults attend **Texas State University** (San Marcos, ~45 min NE) or UTSA (30 min SW).
 - *Northeast Lakeview College* (Universal City) and *St. Mary’s University* (San Antonio) also draw students from this zone.
 - Some ranchers’ children pursue *trade skills* – e.g., welding programs at Comal ISD or agribusiness courses.

Comal ISD has been **rapidly building schools** – a second high school for this area (**Pieper High School**, opened 2021 at 1400 Kinder Pkwy, San Antonio, TX 78260) now serves the far south end (Timberwood Park/Stone Oak within Comal ISD). Pieper HS alleviated crowding at Smithson Valley and is technically just inside Bexar County (78260).

Overall, the zone’s public schools are highly regarded, often a reason families move here. The large geographic area means some long bus rides, but also wide catchment areas letting students participate in FFA, 4-H, and other extracurriculars tied to the Hill Country community.

Grocers & Retailers

Store	Address	Phone	Notes
H-E-B Bulverde – Grocery Superstore	20725 Hwy 46, Spring Branch, TX 78070	(830) 438-3000	The primary supermarket for Bulverde/Spring Branch. Opened 2017 with full bakery, deli, pharmacy.
Walmart (Spring Branch) – <i>coming soon</i>	(Planned at US-281 & Hwy 46)	n/a	A Walmart is planned; currently nearest is Walmart at 281 & Evans (8 miles S).
Home Depot Bulverde	1308 Bulverde Rd, Bulverde, TX 78163	(830) 980-3675	Hardware and building materials store.
Bergheim General Store	1 Old Curry Creek Rd, Bergheim, TX 78004	(830) 336-2444	Historic general store (since 1903) selling feed, hardware, groceries, and famous for its old-time feel.

Store	Address	Phone	Notes
CVS Pharmacy (Bulverde)	20475 Hwy 46, Spring Branch, TX 78070	(830) 438- 1852	24-hour pharmacy near HEB.

**Guadalupe River RV
Park Store** 310 Hwy 281 N, Spring
Branch, TX 78070

*(Continuing Zone 4:
Grocers/Retailers)*

Store	Address	Phone	Notes
H-E-B Bulverde – Grocery Superstore	20725 Hwy 46, Spring Branch, TX 78070	(830) 438- 3000	Primary supermarket for Bulverde/Spring Branch (opened 2017) sahealth.com 】
Home Depot (Bulverde)	1308 Bulverde Rd, Bulverde, TX 78163	(830) 980- 3675	Hardware/home improvement center.
Bergheim General Store	1 Old Curry Creek Rd, Bergheim, TX 78004	(830) 336- 2444	Historic general store (since 1903) – feed, hardware, groceries.
Walmart (planned)	US-281 & Hwy 46 area, Bulverde, TX	n/a	A new Walmart is proposed to serve Bulverde; currently nearest is at Evans Rd & US-281 (San Antonio).
CVS Pharmacy (Bulverde)	20475 Hwy 46, Spring Branch, TX 78070	(830) 438- 1852	24-hour pharmacy near H-E-B.
Bulverde Crossing Shopping Center	20725 Hwy 46, Spring Branch, TX 78070	n/a	Retail hub with H-E-B, eateries (Whataburger, Starbucks), banks, and clinics.
Spring Branch Store (Convenience)	9850 US-281 N, Spring Branch, TX 78070	(830) 438- 4656	Gas, groceries, and bait (for river/lake goers).
Stone Oak Shopping (near zone)	2300-23600 US- 281 N, San Antonio, TX 78258	n/a	Large cluster of stores just south of Bulverde: Target, H-E-B Plus, Sam’s Club, etc., along US-281 in 78258.
Outlet Mall (San Marcos) – regional	3939 S I-35, San Marcos, TX 78666	(512) 396- 2200	(45 min NE, major outlet shops; frequented by zone residents on shopping trips.)

Bulverde/Spring Branch residents often also shop in Stone Oak (far north San Antonio) for big-box retail. For example, many drive ~15 minutes to the **Village at Stone Oak** center

(281 @ Stone Oak Pkwy) which has a Target, Hobby Lobby, and Trader Joe's. Rural residents in Kendalia/Bergheim rely on feed stores (Bergheim General Store) and periodic trips to Boerne or Bulverde for major groceries.

Restaurants

- **Max's Roadhouse** – 5375 US-281 N, Spring Branch, TX 78070. *Lively roadhouse with burgers, steaks, live music and large patio.* (830) 885-2933.
- **Hatch Cafe & Bakery** – 30750 US-281 N, Bulverde, TX 78163. *Charming spot for breakfast, lunch, and baked goods.* (830) 438-1200.
- **Antlers Restaurant (at Guadalupe River)** – 8590 FM 311, Spring Branch, TX 78070. *Hill Country-style American fare with river views.* (830) 885-6094.
- **Vincent's on the Lake** – 10370 FM 2673, Canyon Lake, TX 78133 (just outside zone). *Lakefront dining on Canyon Lake – popular with Spring Branch locals.* (830) 899-7000.
- **Downtown Bulverde** has a few new eateries in the town center:
 - *Front Porch Bar & Grill*, bulverde old town on Bulverde Rd. (casual comfort food).
 - *Wine 101*, 2035 Bulverde Rd – wine bar in a renovated house.
- **Comal County Biergarten** – 33450 Smithson Valley Rd, Bulverde, TX 78163. *Family-friendly beer garden with food trucks – often hosts live bands on weekends.*
- **Kendalia Halle** – 1135 Farm to Market 3351, Kendalia, TX 78027. *While primarily an event hall, during monthly dances they serve barbecue plates and drinks – a true country experience.*
- For chain options, Bulverde now has a *Whataburger (Hwy 46)*, *Chili's* and *Subway*. Stone Oak area (just south) offers everything from Chick-fil-A to P.F. Chang's, which Bulverde folks often drive to.

Local flavors include many **Tex-Mex** spots (e.g., Los Corrales in Bulverde) and **BBQ** (Smokey Mo's BBQ on Hwy 281). Given the semi-rural nature, food delivery is limited, but a number of food trucks rotate through community events and farmer's markets.

Sports Organizations & Recreation

- **Spring Branch Youth Soccer Association** – Recreational soccer league playing at Jumbo Evans Sports Park (located at 101 Jumbo Evans Blvd, Spring Branch, TX 78070; a large county park with soccer fields, a skate park, and walking trail).
- **Bulverde Little League** – Youth baseball for Bulverde/Spring Branch (chartered under Little League). Fields at **Bulverde Community Park** (29815 Bulverde Ln).
- **GVTC Youth Sports Complex** (Jumbo Evans Park) – offers flag football and basketball leagues through YMCA partnerships.
- **Comal County 4-H & FFA** – Very active in this agricultural area. Smithson Valley High and Middle have FFA programs; 4-H clubs (e.g., Bulverde 4-H) meet at

Bulverde Senior Center and focus on livestock raising, shooting sports, and homemaking skills.

- **Hill Country Cricket Club** – Niche: a cricket pitch exists near Spring Branch (owing to an international community in Stone Oak). Matches are informal on Sundays at a field on Spring Branch Road.
- **Gyms/Fitness:** *Bulverde Gym* (local fitness center on Bulverde Rd), *Anytime Fitness Spring Branch*, and boutique studios (yoga, Pilates) in Bulverde Crossing area. Many neighborhoods also have private pools and tennis courts (e.g., Timberwood Park has a private neighborhood park with a pool, fishing lake, and disc golf).
- **Canyon Lake** – though east of zone, many in Spring Branch partake in water recreation (boating, jet skiing). Several marinas on the west side of Canyon Lake (Cranes Mill Marina) serve Spring Branch residents.
- **Rodeo & Equestrian:** This zone has an equestrian culture: *GVTC Arena* in Bulverde hosts youth rodeos and riding clinics; *Twin Elm Guest Ranch* (between Bulverde and Boerne) offers trail rides.
- **Golf:** *River Crossing Golf Club* – 500 River Way, Spring Branch, TX 78070; an 18-hole private golf course community along the Guadalupe. Also *Canyon Springs Golf Club* (on 281 near Stone Oak) is 15 min away.

Recreation Areas & Facilities

- **Guadalupe River State Park** – (Also listed in Zone 1, as it straddles Kendall/Comal). Primary access via 3350 Park Rd 31, Spring Branch, TX 78070. *Offers swimming, tubing, and 5 miles of river frontage – extremely popular in summer. sahealth.com Hiking trails and campgrounds available. Reserve in advance for weekends.
- **Honey Creek State Natural Area** – Adjacent to Guadalupe River SP (entry via guided tours only). *Pristine example of Hill Country ecology, guided hikes on Saturdays.*
- **Jumbo Evans Sports Park** – 101 Jumbo Evans Blvd, Spring Branch, TX 78070. *County park with sports fields (soccer, baseball), playground, skate park. Great for family outings.*
- **Bulverde Community Park** – 29815 Bulverde Ln, Bulverde, TX 78163. *City park with playgrounds, splash pad, sports courts, and pavilion. Hosts Bulverde Jubilee and BBQ cook-offs.*
- **Tejas Rodeo Company** – 401 Obst Rd, Bulverde, TX 78163. *Weekly Saturday night rodeos March-November, plus a steakhouse and live music. A must-visit for authentic Hill Country rodeo action. (830) 980-2226.*
- **Natural Bridge Caverns & Wildlife Ranch** – 26495 Natural Bridge Caverns Rd, San Antonio, TX 78266 (just SE of zone). *Showcase caves with tours and an African safari-style wildlife park; major attraction ~20 min from Bulverde.*
- **Kreutzberg Canyon Natural Area** – Northeast Kendall County (mentioned in Zone 1; accessible for Kendalia/Bergheim residents as well).
- **Fishing & Hunting:** The Guadalupe River (at Guadalupe River SP and various road crossings) offers fishing for bass and Guadalupe River trout (in winter TPWD stocks

trout). Hunting is common on private ranches for deer and feral hogs; many families maintain deer leases.

- **Vineyards/Winery:** *Tejas Winery* in Bulverde and *Umbra Winery* in Spring Branch have tasting rooms – part of the growing Hill Country wine scene.

Residents enjoy a **quieter pace** – tubing the Guadalupe in summer, community festivals (Bulverde Jubilee in August, Spring Branch May Fest), and scenic drives along FM 1863 or Blanco Rd. The eastern night skies are dark enough for stargazing. Overall, recreation balances river fun, parks, and the cowboy heritage events like rodeos.

Job Placement & Workforce Development

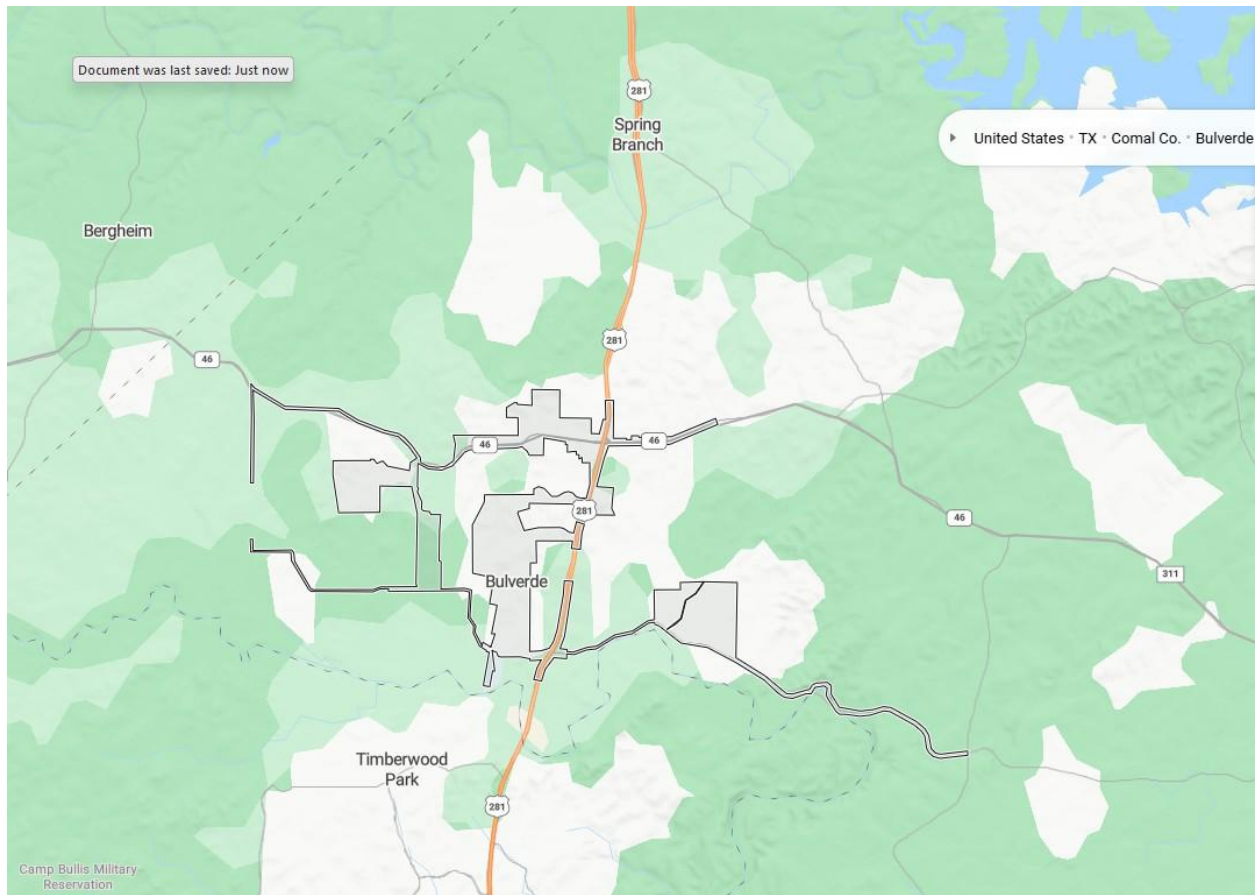
Resource	Address	Phone	Website/Notes
Workforce Solutions Alamo – New Braunfels Career Center	183 Ih 35 S, Ste 220, New Braunfels, TX 78130	(830) 606-0935	Nearest full-service workforce center (serving Comal County). Offers job listings, training referrals.
Bulverde/Spring Branch Economic Development Foundation	121 Bulverde Crossing, Ste 115, Bulverde, TX 78163	(830) 228-5482	bsbedf.com – Provides business resources, and posts local job opportunities especially as retail sector grows.
GVTC Communications – Hiring (major local employer)	36101 FM 3159, New Braunfels, TX 78132	(830) 885-4411	GVTC (rural telecom co-op) is based in zone; often has tech and customer service jobs. See gvtc.com/careers.
Bulverde Area Chamber of Commerce – Job Board	2975 Bulverde Rd, Bulverde, TX 78163	(830) 438-4285	bulverdespringbranchchamber.com – Local job postings in small businesses, networking breakfasts.
Project Workforce (Bulverde) – Training	(various church venues)	n/a	Community initiative (by area churches) offering resume workshops and skilled trades training nights (advertised via Chamber).
Texas Workforce Vocational Rehab (New Braunfels)		(830) 629-2010	Assists disabled job seekers in Comal.

While many in this zone commute to San Antonio (thus tapping that job market), the local economy is expanding. The **Bulverde/Spring Branch EDF** notes recent job growth in retail (with the H-E-B center), healthcare (clinics), and construction trades. Workforce Solutions Alamo’s New Braunfels office serves Comal County, including Bulverde careeronestop.org

】 . They periodically hold rural job fairs in Bulverde (e.g., at the Bulverde Activity Center). The Bulverde/Spring Branch Chamber is very active in connecting employers with job seekers through monthly mixers and an online job bank.

Additionally, **Caterpillar** and **Aisin** have manufacturing plants in Seguin (30–40 min), and some residents work there. Given high education levels in parts of this zone, entrepreneurial activity is notable – many run small businesses or remote-work (telecommuting) for companies in San Antonio/Austin. The push for improved internet by GVTC has enabled more work-from-home arrangements, further boosting local daytime population and demand for services.

Maps & Visuals: *(See attached images for zone maps and ZIP code boundaries.)* Each zone is illustrated by a detailed map highlighting ZIP code areas and key locations such as schools, parks, and major roads for orientation zipmap.net/zipmap.net】 . The maps show Boerne at the center with Zones 1–4 spanning outward within a ~30-mile radius. These visuals help contextualize the proximity of zones to one another (e.g., Zone 3’s overlap with San Antonio, and Zone 4’s extension along Hwy 281).



Conclusion: The 30-mile radius around Boerne encompasses a dynamic region where small-town Hill Country charm meets growing suburban development. From the historic downtown of Boerne to the rodeo arenas of Bandera, the shopping meccas of northwest San Antonio, and the riverfront retreats of Bulverde, each zone offers a distinct lifestyle. This comprehensive report provides a reference for residents and newcomers alike to understand local amenities, services, and community resources across this region.